



A MESSAGE FROM OUR EXECUTIVE DIRECTOR

This was a year of building and growth. Secure in the foundation that we have built, we have reimagined what is possible, building new relationships and growing our profile on campus. This year, it was clear that our students would benefit from broader and deeper campus relationships. This inspired us to work with a wide range of campus departments, create an internship with Adamah on Campus, and develop several new interfaith initiatives, culminating in the Towson Community Multi-Faith Art Show.

One of the greatest strengths of Towson Hillel is the way we connect our students to life beyond campus. Whether it is through Hillel International, the Associated, or another organization, we help connect our students with peers, alumni, and potential mentors. They have built bridges at the Hillel/HBCU Unity Dinner and celebrated vibrant Jewish life and joy at the Yallapalooza concert in Philadelphia.

At its heart, Towson Hillel is all about our students. We met students where they were, buying 300 cups of coffee. We fed students when they came to us, serving nearly 1,000 meals. We ran learning cohorts, helping our students deepen their understanding of and connection to Judaism and Israel. And we invested in our students as leaders and creators of their Jewish lives through internships and student-driven programs.

We continue to provide opportunities and meaningful experiences that keep our students Jewishly connected throughout their college years, with the ultimate goal of having them carry their Jewish pride and practice with them for life.

RABBI ALEX SALZBERG

Executive Director



A MESSAGE FROM OUR BOARD PRESIDENT

This year marks the end of my tenure as Board Chair of Towson Hillel. During my time in this role, I've had the privilege of watching Towson Hillel grow and strengthen each year, with Jewish life at Towson University now more vibrant than ever. None of this would be possible without the incredible support of our alumni, parents, and community members. **Thank you for supporting me, and our Jewish students!**

EMILY LEVIN

Board President

A YEAR OF IMPACT

Our presence on campus enables us to serve over 1,700 Jewish Tigers annually, cultivating a vibrant and inclusive community that enriches the college experience, offers support, and celebrates Jewish identity and values.

Towson Hillel's program highlights from the year include:

290

**STUDENTS ATTENDED A
SOCIAL OR CULTURAL
EVENT AT HILLEL**



151

**STUDENTS CELEBRATED
SHABBAT OR A JEWISH
HOLIDAY WITH HILLEL**



387

**UNIQUE # OF
STUDENTS WHO
VISITED HILLEL**



20

**STUDENT LEADERS
& INTERNS**



80

**JEWISH TIGERS ARE
HIGHLY ENGAGED BY
HILLEL**
(6+ HILLEL EVENTS OR A HIGH-
IMPACT EXPERIENCE)

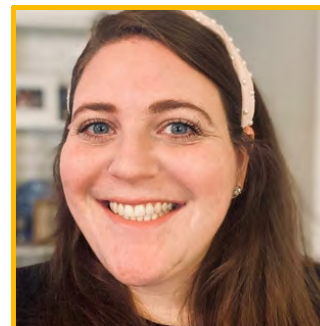


Rabbi Alex Salzberg | Executive Director

Rabbi Alex Salzberg (MA '11) is excited to be back on campus as the Executive Director of Towson Hillel. He grew up in Baltimore, about 15 minutes from TU's campus. After earning his master's degree in Jewish Education from the Baltimore Hebrew Institute at Towson University, he was ordained a rabbi at the Jewish Theological Seminary. Rabbi Alex believes that community is the essence of Jewish life and sees his role at TU Hillel as helping students find their place in the Jewish community, both on campus and for the rest of their lives. When not on campus, Rabbi Alex is home with his spouse and 3 children, baking bread, or woodworking.

Jamie Aaron | Assistant Director

Jamie Aaron joined the Towson Hillel team in 2022 and has loved every moment working on campus! A native of Montgomery County, MD, Jamie is a proud product of congregational education and Jewish youth groups & camping. Jamie's experience working both at synagogues and JCCs helped shape her understanding of community engagement. When she's not at Hillel, you'll be able to find Jamie enjoying the changing seasons, rooting for the Orioles and Capitals, reading her latest BookTok find, and spending time with her family.



Sean Levy | IACT Coordinator for Israel and Jewish Student Life

Sean Levy is excited to be back at his alma mater as our IACT Coordinator. Sean is proudly from Delaware County, PA, and graduated from Towson University in 2022 with a degree in sociology & anthropology. While at Towson, he was an active member of Hillel, a brother of the Alpha Epsilon Pi fraternity, and a counselor at Camp Airy. Since graduating, he spent time as the Springboard Fellow at University at Albany Hillel, focusing on Jewish Learning and Student Leadership. Sean looks forward to continuing to lay down roots in the Baltimore Jewish community.

Mia Bulmash | Springboard Fellow

Mia Bulmash is excited to start her professional career as a Springboard Fellow. She grew up in the suburbs of Chicago and then made her way to Boca Raton for her undergraduate degree. At Florida Atlantic University Mia studied history and minored in Jewish Studies. During her time at FAU she was heavily involved with the Hillel there, where she served on the student board for 3 years, one of them as President. Mia is excited to lead the students at Towson Hillel and give them the Jewish community and experience she was given during her time as a student.



Ana Levy | Campus Marketing and Development Manager

Ana Levy began her career as a Springboard Fellow at GW Hillel before working at Repair the World. She has since returned to working with campus Hillels as a Campus Marketing & Development Manager. Ana was born and raised in California, where she studied Communication and Food Studies at UCLA. She now resides in Washington, D.C., where she enjoys cooking new recipes, gardening in her community plot, and attending yoga classes.

STUDENT LEADERSHIP

The executive student board is an elite group of student leaders who have a passion to bring their ideas to life. The executive student board is designed for any student that is driven, creative, outgoing, and innovative.



FALL 2024

Adina Naftalin '25 | President
Artie Mackey '26 | Vice President
Tillie Kraus '26 | Jewish Life Chair
Noam Strauss '25 | Treasurer
Rozelle Mamriev '25 | Engagement Intern
Aden Schmall '25 | Marketing Intern

SPRING 2025

Shira Goldstein '26 | President
Bethany Hackerman '25 | Outreach Intern
Dani Levine '26 | Marketing Intern
Aviva Minkoff '26 | Shabbat Intern
Eva Mendoza, '28 | Hillel After Dark Intern
Elani Joseph '28 | Bagel Brunch Intern
Atara Parness '28 | Bagel Brunch Intern
Ethan Seldin '28 | Jewish Learning Fellowship Intern
Ari Adashek '26 | Kol Yisrael Intern

FALL STUDENT PROGRAMS

Hillel
TOWSON UNIVERSITY



**WELCOME
WEEK**



**OCTOBER 7TH
MEMORIAL**



**GOLEM
MAKING**



**YALLAPALOOZA -
HILLEL CONCERT**



BAGELS WITH ISRAELIS

SHABBAT & JEWISH HOLIDAYS

Hillel
TOWSON UNIVERSITY



SHABBAT DINNERS



SUKKOT

CHANUKKAH



PASSOVER

SPRING STUDENT PROGRAMS

Hillel
TOWSON UNIVERSITY



**YOM
HASHOAH**



JEWISH COMMUNITY NIGHT



**AEPI
KICKBALL**



**JAVA WITH
JAMIE**



**SENIOR
NETWORKING**

INTERFAITH & CAMPUS PARTNERSHIPS

Hillel
TOWSON UNIVERSITY



ASK ME ANYTHING



HBCU UNITY DINNER



MULTI-FAITH ART SHOW



LEARNING WITH THE TABLE: LUTHERAN EPISCOPAL MINISTRY



Hillel Student Lounge

Our home away from home, the Lounge is where students come to relax, eat meals, see their friends, and find Jewish community.

The Lounge is located in Newell Dining Hall, which features Kosher dining options, making it a central hub for Jewish life at Towson University.

The Commons

The Commons is our program space. With space for nearly 100 people and a full kosher kitchen, this space allows us to cook meals, to bake challah, to welcome guests, and to host large-scale programs.

This space is available for private rentals and events.



Make a lasting impact for Jewish students at Towson:

For more information on legacy or endowment giving, please email
Rabbi Alex, at rabbialex@towsonhillel.org

Gifts and generous donations from our family, friends, supporters and sponsors allow us to thrive. Thank you to everyone who has donated to Towson Hillel in the last year, with special thanks to the donors that contribute \$1,000 or more and are a part of our Leadership Circle:

Larry and Naomi Amsterdam
Hannah Baer
Adam and Allison Baumwald
Drs. Hana & Eyal Bor
Myrna & Ben Cardin
Jaclyn & Irwin Cohen
Sheryl B. Cooper
Deena and Jay Dermer
Susan J. Ganz
Jonathan and Jayne Havens
Andrew Horowitz
Larry & Sue Kraus
Judy and Herschel (z"l) Langenthal
Emily and Scott Levin
Judy & Jerry Macks
Darren Margolis & Carrie Rich
Jeffrey S. Rosen
Sybil Rosenberg
Steve and Ginny Salzberg
Neal Shaivitz
Harel & Randi Turkel
Richard E. Vatz
Paula Weisman
Amanda & Roger Wise
Ellen Kahan Zager and Jack Zager
The Harvey and Linda Litofsky Family Foundation
The Frank & Miriam Loveman Charitable Foundation
The Harvey M. Meyerhoff Fund
Israel and Mollie Myers Foundation, Inc.
PNC Bank
The Isaac & Leah Potts Foundation
Ronnie H. and Alli Russel Charitable Foundation
Saul, Ewing, Arnstein & Lehr LLP
Baltimore Hebrew Congregation – Rabbi's Discretionary Fund
Beth Tfiloh Congregation – Rabbi's Discretionary Fund
Chizuk Amuno Congregation – Rabbi's Discretionary Fund



Hillel

TOWSON UNIVERSITY

Towson Hillel
Center for Student Diversity
8000 York Road, University Union
Towson, MD 21252

www.TowsonHillel.org